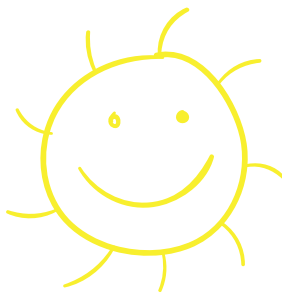
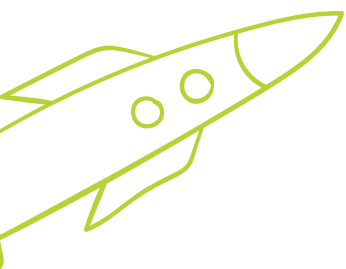


GREAT ART FOR GREAT KIDS



ELEVATING SERIOUS ART TO THE HEIGHTS OF PURE GIGGLE-INDUCING FUN, THIS EXHIBITION OF CLEVERLY REIMAGINED MASTERPIECES IS THE PERFECT WAY TO INTRODUCE GREAT KIDS TO GREAT ART. IT'S FUN, INTERACTIVE AND REALLY ENGAGING FOR KIDS AND PARENTS ALIKE!



FAMILY FUN

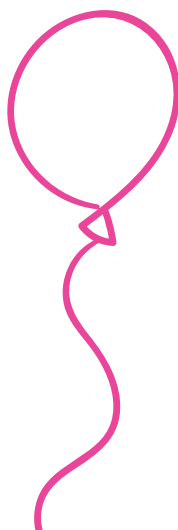
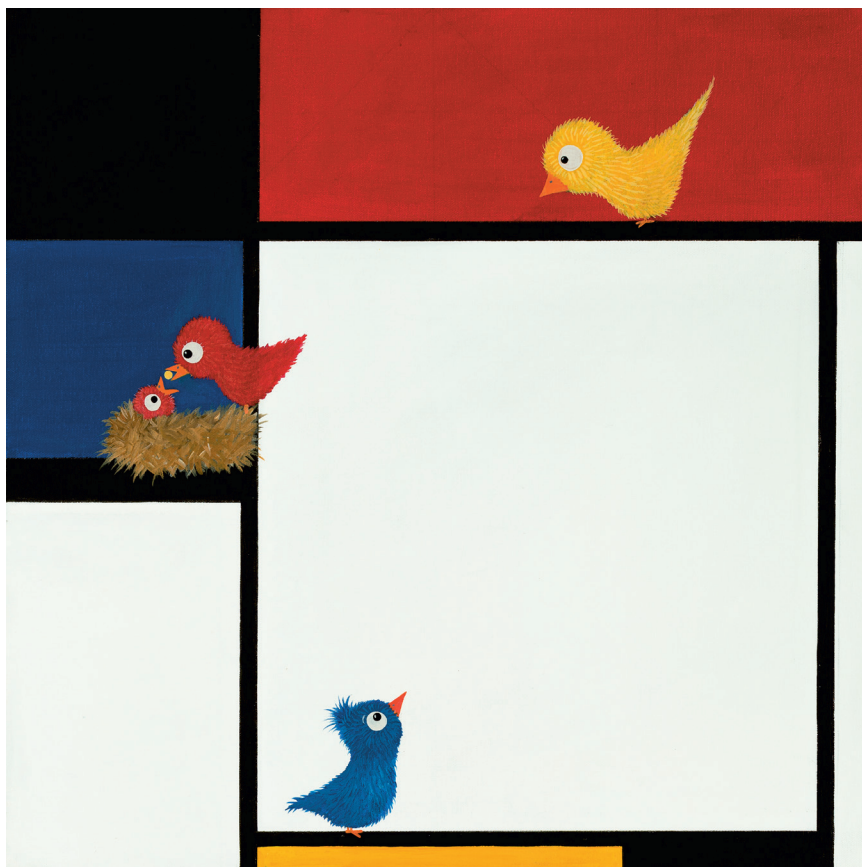
Even the greatest works of art will often fail to enthrall young children. But insert a funny, loveable animal into the scene, and it's a whole different story. This delightful exhibition takes artistic license as it reimagines the world's most famous paintings for a young audience.



A teddy bear surfs Hokusai's Great Wave; a charming pig changes Mona Lisa's smile from cryptic to comic; Munch's scream is far less angsty on a panda's face, while Whistler's mother—the elephant—gives new meaning to Arrangement in Grey and Black.



FAMILY FUN



While it covers every major artistic school in art history, from Michelangelo and Velázquez to Kahlo and Rothko, each snort and guffaw offers an opportunity to explore the paintings in ways that will help kids remember them for the rest of their lives.



Practical info

WE CREATE:

- The static and immersive artworks and decors
- We bring the designers, the artistic director and the tech crew

WE NEED:

- An event area, darkened, of about 1000M²
- Rigging, lighting and carpeting
- Local crew assistance
- Local marketing & promotion team

REVENUE:

Capacity: up to 1500 people per day

Load in: 4 days

Show days: Up to 3 months

Load out: 3 days

Average ticket price: up to €15

+ Ancillary revenue

