

Titanosaur

Life as the biggest dinosaur



Natural
History
Museum
London

The Touring Exhibition

Titanosaur

Life as the biggest dinosaur



"A joy for children and inner children alike"

★★★★★ The Times

"Perfectly kid-friendly"

★★★★★ Time Out

"Totally roarsome"

★★★★★ Evening Standard



What to expect

This new, ground-breaking exhibition brings visitors face to face with the formidable titanosaur Patagotitan – **the largest known creature ever to have walked the Earth!**



- Full-scale replica of *Patagotitan mayorum* based on the most complete skeleton ever found.
- An outstanding visitor experience for families with children aged 5-11 years old.
- Discover how Patagotitan survived and thrived in its habitat.
- A step back in time delivered through dramatic and theatrical storytelling to imagine what the Titanosaur and its world were like.
- Interpretive graphics, hands-on exhibits and multiplayer interactives.
- A turnkey exhibition that does not require stringently climate-controlled galleries for display.
- Opportunities to add local content and specimens in discussion with the Natural History Museum (NHM).
- Encourage a deeper appreciation of the scale and wonder of the natural world.

Over 345,000 visitors came to see the exhibition during its nine months at the NHM in London!



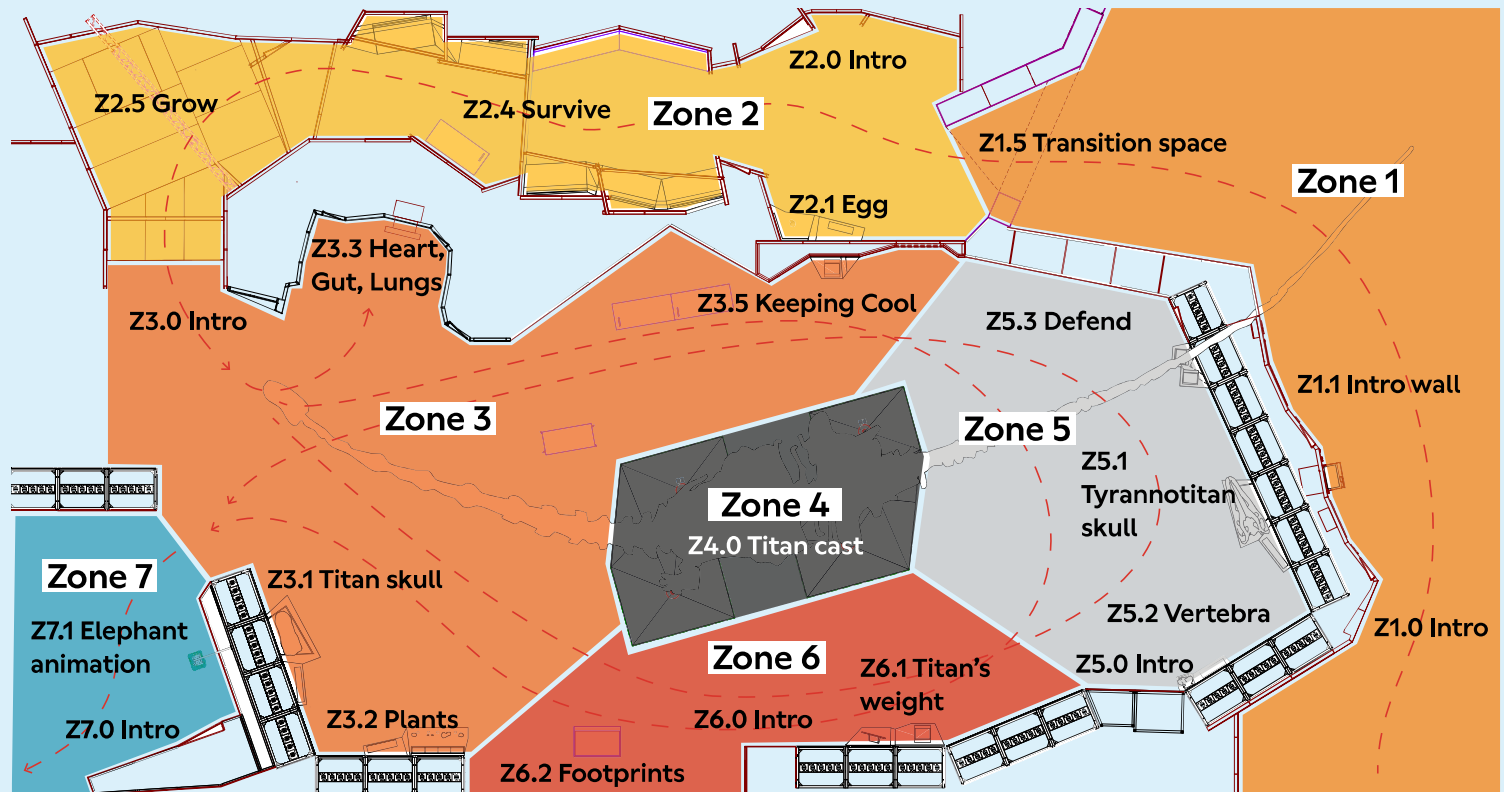
Key exhibition themes



- Like dinosaurs themselves, the thrill of this exhibition is in inhabiting the space between reality and imagination. The massive cast is mounted within a theatrical setting surrounded by a series of beautiful, artistic exhibits which tell the story of this giant and how it survived and thrived in its environment.
- By exploring the life of this impressive Titanosaur, the exhibition ignites a sense of wonder in the variety and dynamism of the natural world.
- With no living animal close in size, the remarkably complete fossils of Patagotitan allow us to understand how life is possible at extreme size.
- The larger an animal becomes, the harder it is to hold up its own weight and gain enough energy. Adaptations and the right environmental conditions enabled Patagotitan to overcome these challenges.
- Although it came with challenges, Patagotitan's large size was advantageous, enabling it to thrive by reaching more food, being safe from predators and being more suited to travelling long distances.



Exhibition sections



Intro: Delve into the incredible discovery of the Patagotitan species. First explorations of Titanosaur, its scale, and the world it inhabited 101 million years ago.

Growing up: Zone split into three sections (Hatch, Survive and Grow) exploring the early life of the Titanosaur. Meet a tiny Titanosaur hatchling and protect it as it grows through the most vulnerable period of its life.

Finding food: Go in search of enough food to keep the whole herd fed, experience the Titanosaur's huge appetite and explore what it took to power such a huge body.

Staying safe: Defend the herd against the fiercest predator of the day – Tyrannotitan.

Moving with the herd: Journey through the landscape in search of food and water with the Titanosaur, as it tries to keep up with its new herd, whilst supporting its huge body.

Outro: Travel to the present-day to meet our largest land mammals and other large animals that lived throughout history alongside and after Titanosaur. Celebrate the importance and magnificence of large animal as evolutionary marvels, while encouraging a sense of stewardship towards today's biggest animals.

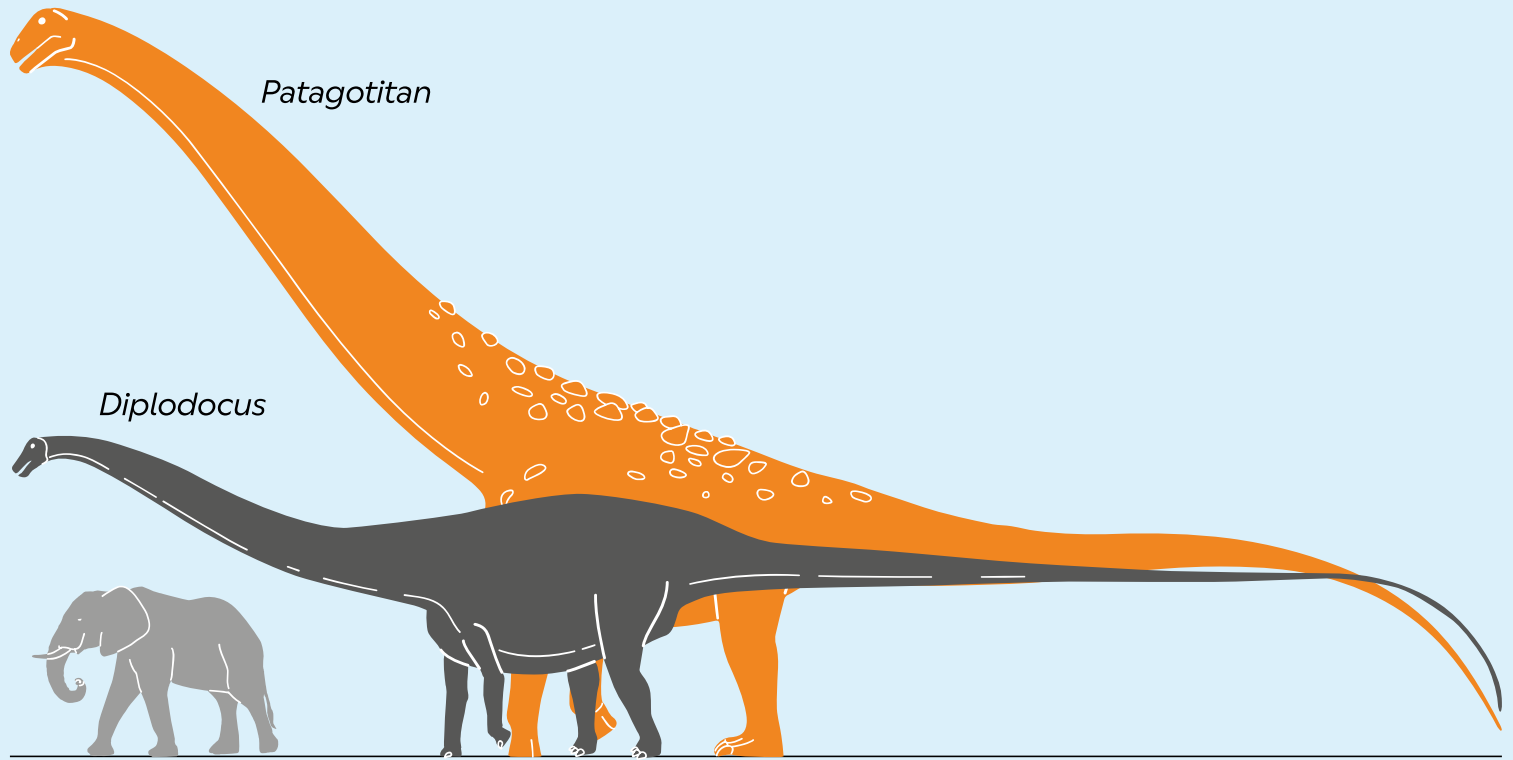


Look and feel

- The magnificent life-size cast is at the centre of this extraordinary exhibition and is a spectacle for visitors to remember.
- Backlit illustrative setworks envelope the Titanosaur and highlight parts of its story.
- Colourful and theatrical lighting techniques, shadows and projected silhouettes draw attention to the scale of this large sauropod.
- Design concept inspired by children's pop-up books, illustrations and paper theatre peepshows, opening up in a series of folds, cut outs and layering.



Patagotitan and the cast



African savannah elephant

Titanosaurs are a group of sauropod – long-necked, herbivorous – dinosaurs. They were the largest animals to ever walk on Earth. Patagotitan mayorum is a type of titanosaur, and one of the biggest yet to be excavated. It was discovered in 2010 by a farmer who spotted the tip of a huge, fossilised bone on his ranch in central Patagonia.

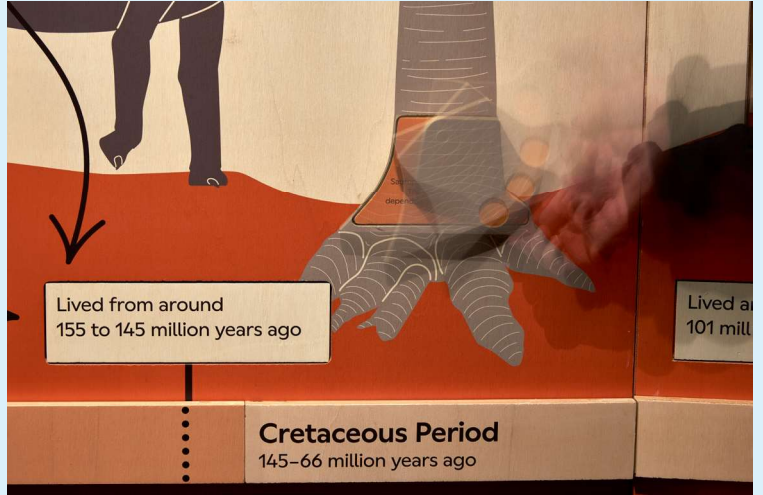
Patagotitan lived around 101 million years ago during the Cretaceous Period. From its nose to its tail, the living animal measured approximately 37 metres in length. This is approximately the same length as nine London fire engines!

The living animal would have weighed around 57 tonnes, which is more than nine African savannah elephants, the largest animals alive on land today. The Patagotitan cast weighs 2.67 tonnes. This is approximately the same weight as 59 velociraptors and 534 domestic cats!



Hands-on exhibits

As they weave their way around the gallery, visitors encounter a series of very exciting hands-on exhibits:

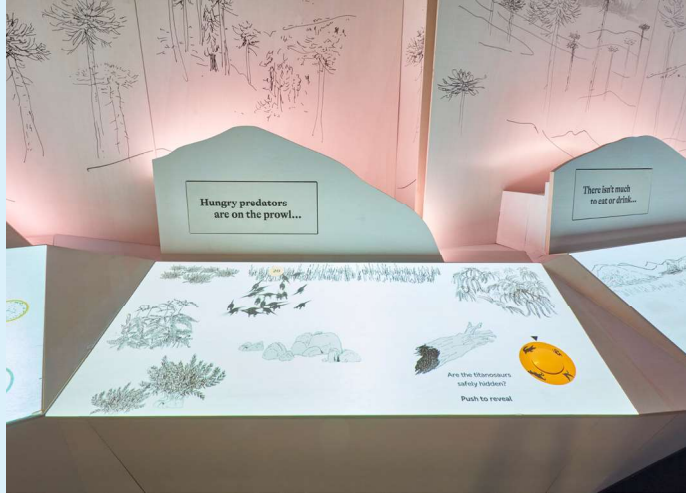


- How many people does it take to outweigh a giant dino? Slide onto a scale with friends and family to discover how your weight compares to that of a titanosaur.
- Step inside the titanosaur's body, push the heart to pump blood through the body, fill its lungs with air to discover how it breathed, and squeeze food through its gut to find out how it processed the mounds of food it ate.
- Explore a pop-up-book experience lifting flaps, opening drawers, and rotating spinners to learn more about the story of Patagotitan's discovery.
- Stretch your legs and try walking like a dinosaur to compare your longest strides to titanosaur's.



Touchscreen interactives

Touchscreen interactives engage the audience directly in Titanosaur's story:

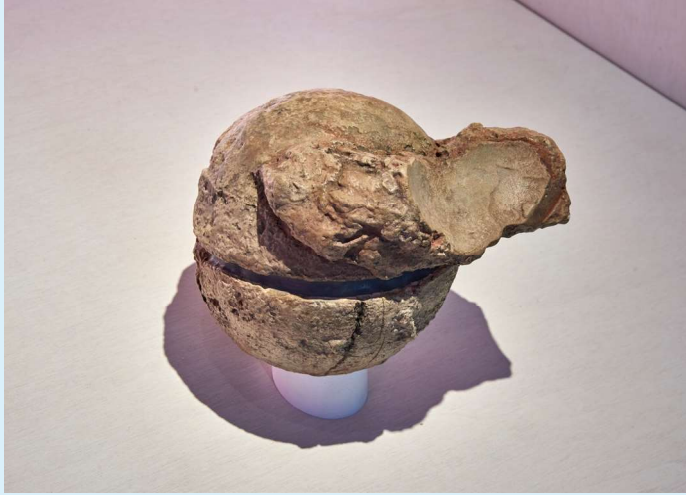


- Guide young titanosaur hatchlings from their nest to the safety of the forest through a variety of dangers, including fearsome predators, wildfires and volcanic eruptions.
- Interact with animations that explain how Titanosaur was able to regulate its body temperature and compare with reptiles and mammals.
- Select the adaptations that enabled Patagotitan to evolve to such an enormous size and discover how it defied gravity.
- Learn how Titanosaurs defended themselves from predators by playing a multiplayer game divided into gaming stations.



Touchable replicas

Casts allow visitors to examine first-hand the evidence found by palaeontologists. Replicas include:



- A Titanosaur's egg. It's hard to believe that such a huge creature could come from something so small!
- Patagotitan's skull, exploring the features that allowed it to eat such huge quantities of food.
- Fossil plants from the Cretaceous, showing the kinds of food that Patagotitan would have had access to – horsetails, ferns, conifers and monkey-puzzle cones.
- The frightening skull of a Tyrannosaurus – one of Patagotitan's most fearsome potential predators.
- The vertebra of a Patagotitan, where visitors can feel a bite mark made by a predator or scavenger.



What's included



- The extraordinary cast of Patagotitan mayorum
- Touchable replicas including plinths, mounts and hanging fixtures
- Hardware and digital files for AV and interactive exhibits
- Physical networks
- Media assets, such as films, sound, and other digital content.
- Exhibition toolkit, sample layout and CAD drawings package
- Lighting fixtures and electrical system
- Full exhibition text, graphic panels and labels in British English
- Live graphics artwork file templates (InDesign) for single and dual language
- Marketing, assets and templates
- Materials for object care and conservation
- Support and installation/ de-installation by the NHM team
- Opportunity to purchase wholesale dinosaur related retail and publishing products.



Exhibition technical information



Format: turnkey

Gallery size:

from 750sqm / 8,000sqft

Ceiling height required:

6–7m / 20–23ft

Cast length: 29m/95ft

**Hosting venues
are responsible for:**

- Exhibition rental fee
- Costs for site visit by NHM staff
- Exhibition shipping costs
- Insurance (shipping insurance + insurance during the display period)
- Any translation that is required for the captions and the information panels, from the British English provided.
- Production of any translated information panels and caption panels
- Publishing and retail products for a shop at the venue (the NHM offers the Titanosaur retail collection and a selection of titanosaur/sauropod related books, which are available for purchase).
- NHM technical team transport, accommodation, and subsistence
- Local marketing, staffing, and ticketing



Contact us

Touring Exhibitions

Natural History Museum
Cromwell Road
London SW7 5BD
UK

touring@nhm.ac.uk

nhm.ac.uk/touringexhibitions



Natural
History
Museum
London