



INSTRMNTS

THE INTERACTIVE MUSIC EXPERIENCE

Host Book



an exhibition by

 PangeiArt



Explore, Play, and Perform Together

INSTRMNTS is an exhibition that brings to life innovative musical instruments, sound installations, AV displays, and interactive experiences for a joyful, hands-on adventure.

It invites visitors to explore and play a wide range of custom-built instruments, most designed to be played by several people simultaneously.

The exhibition encourages collaboration, teamwork, and a unique musical dialogue between participants, with installations that celebrate nature through sound. Audiences are taken on a playful journey of musical discovery.

A tall, slender, orange-colored instrument with many strings, resembling a harp or a large stringed instrument, stands in a dark, forest-like setting. The instrument is illuminated from above, creating a bright glow. The background is dark with some foliage visible. The instrument has a large, rounded, metallic base. The overall scene is artistic and evocative of nature.

TOHA - the nest of sociable weaver birds

instrument with 44 strings, two cushions, metal
structure with touch screen

All our instruments
are inspired by the
natural world.

Whether through large-
scale wall projections or
more compact monitor
screens, our video
imagery brings that
world into the
exhibition, allowing
visitors to interact with
forests, deserts, stars
and planets, glaciers,
icebergs, and even
penguin colonies, while
playing.

Exhibition Areas

Each instrument tells its own story

Instruments are grouped by themes inspired by their origin stories that shaped their designs.

Visitors follow a path between areas where they can play the instruments on display.

Themes on each area are:

interstellar and underwater worlds
with instruments such the acruX, sturn and epsilon lyrae

cloud forests
tahra, morcego, some lamellophones

savana animals, birds
tipaw, toha, several types of kissanji

age of dinosaurs
dino installation with eight instruments

game of dialogue
dialogue table, uana



Hosting INSTRMNTS

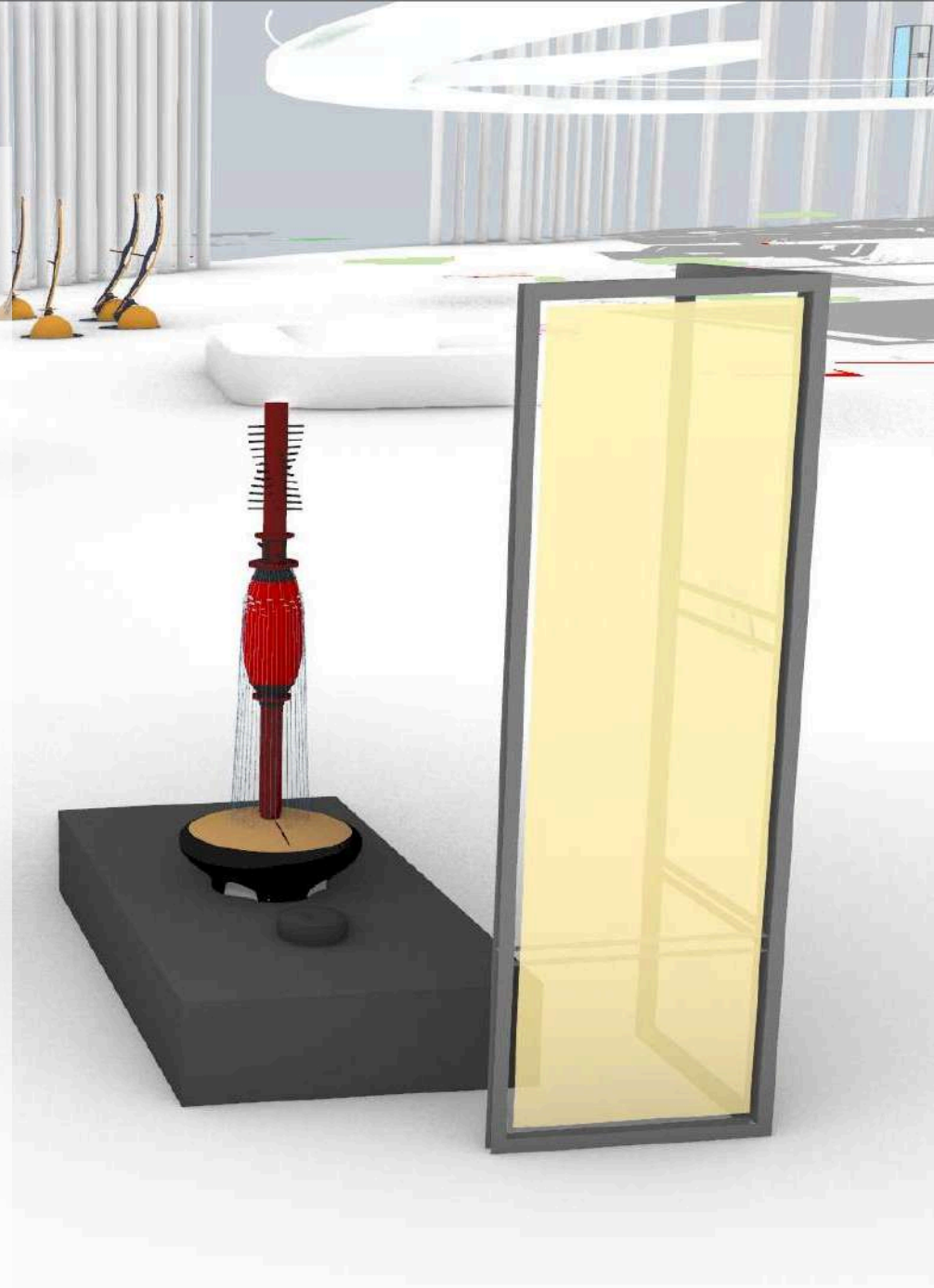
We offer an exhibition ready to be shipped in crates with:

- up to 30 original instruments
- museography labels with QR codes for a deeper engagement
- plinths for smaller instruments
- metal structures with ipads showing how instruments are played
- speakers, mixing desk, ipad, lighting for acruksen installation
- carpets for designated areas
- a detailed exhibition manual

We also offer layout planning using 3D models of the instruments placed within the gallery space. Animated renderings are available for enhanced visualization and planning support.

Required:

- for projection mapping option, equipment and its installation
- gallery space lighting
- transportation.



Size:

The exhibition will cover from 300 sqm to 900 sqm

Availability:

It will be available from summer 2025

Audiences:

The exhibition is designed to engage with large audiences, and is particularly appealing for children of all ages and families.

Additional Installations:

Sonic Bioma
with 18 suspended elements, soundtrack with speakers and projection or large plasma

GigantikArpz
(outdoor, park, lake)
with ten strings that can reach from 25m to 120m each.



Experience Options

Dive into a world of
creativity with:

Immersive video
projections

Hands-on workshops for
all ages

Live performances that
bring the instruments to
life

Storytelling sessions that
spark the imagination

GigantikArpz outdoor
installation

Workshop program

INSTRMNTS offers a rich program of workshops led by local mediators, often musicians, who take part in a brief but comprehensive training course with us. The exhibition welcomes school groups, families and the visiting public.



TIPAW - a tiger in the museum

musical instrument with Indian bowls, metal structure with touch screen



[click image to watch video](#)

AFRIKA MUSEUM, BERG EN DAL
NETHERLANDS, 2023

TAHRA - the hidden tarantula

instrument with gourd and four bows, percussion on eight strings

Visitors are free to explore on their own
or participate in the workshop program

UANA - for four players

instrument with 45 metal lamellae, pentatonic scale with 3 octaves



[click image to watch video](#)

... was the "Acrux" of
Epsilon Lyrae, built using geometries
related to the orbits of planets or
stars.

Follow this project on twitter at
twitter.com/victorgama



STURN - the rings of Saturn

instrument with stacked circular metal keys



DINO INSTALLATION - the age of dinosaurs

eight single string instruments, played with friction bows



ACRUXON installation

Four instruments with active speakers, samplr app running on an iPad
mixing desk, lighting, metal structure with panel and touch screen.



PHILHARMONIE LUXEMBOURG, 2022

[click image to watch video](#)

ACRUX - the Southern Cross constellation

An iPad runs an app with samples to play the virtual acux.



GALCRUX - bass acruX



MORCEGO (BAT)

wearable instrument with four strings
played with a thin stick on each hand



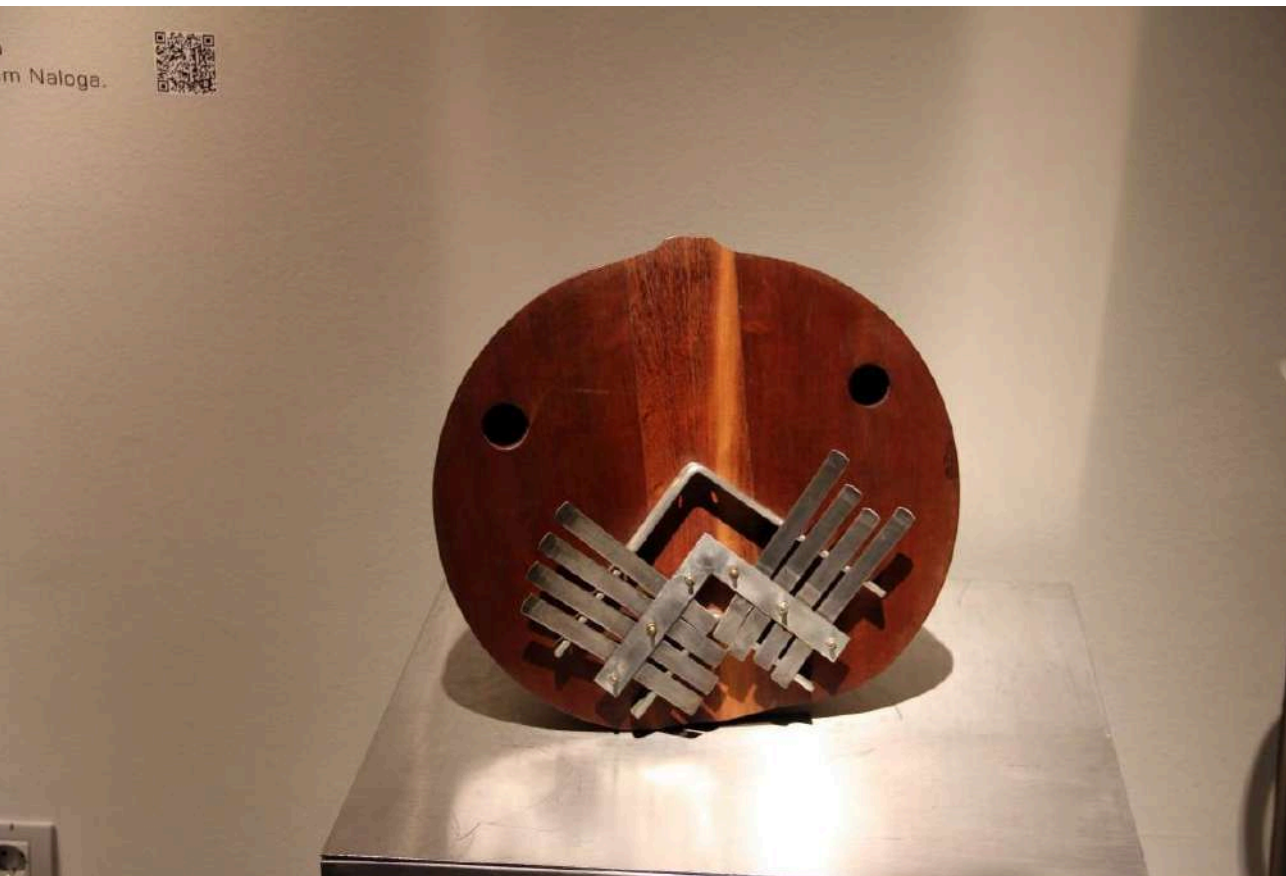
ZULÃO

lamellophone on a crystal glass jar



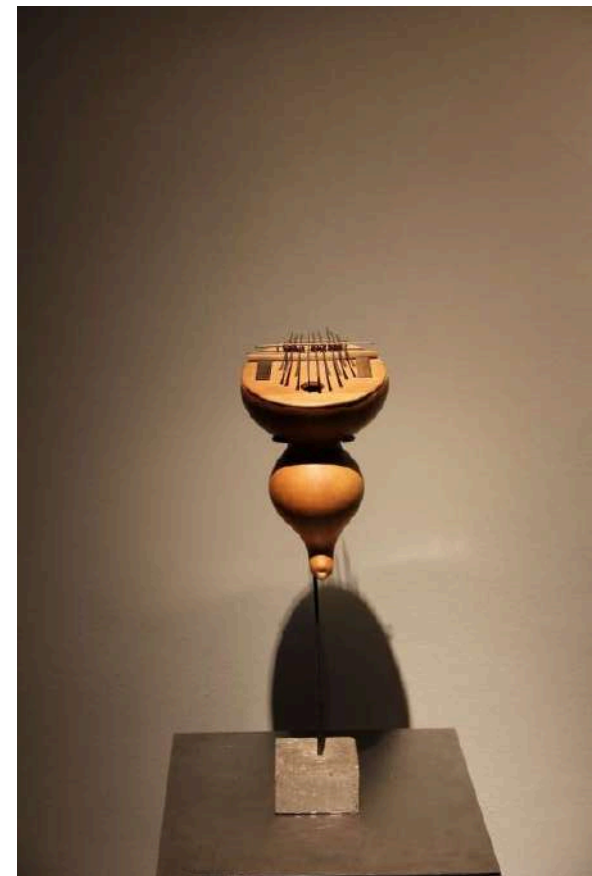
GUIN

lamellophone with large gourd



KISSANJE KABA

lamellophone with bottle gourd



ESPI

instrument with aluminum keys in a spiral scale

ESPI

El Espi es un lamelófono con teclas dispuestas en una línea curva generada por un punto que se va alejando progresivamente del centro a la vez que gira alrededor de él. Esta configuración le otorga una afinación que respeta la geometría de una espiral ascendente. La sonoridad de teclas de aluminio, un material poco utilizado en este tipo de instrumentos, es también un elemento determinante en la sonoridad que produce.



KISSANJE - sky & earth

double faced lamellophone played by two musicians



Live Performances

Our instruments come alive in solo or ensemble performances, transforming the gallery or auditorium into a vibrant world of sound and music for all ages.



© José Frade/Teatro S.Luiz

[click image to watch video](#)



what's MY name?

Storytelling/Live Music/Dance/Video

Three visionary performers come together in a richly layered, multidisciplinary performance that pulses with passion for their homelands.

Through music, poetry, storytelling, movement, and videos, they share a vision of the African continent.



GIGANTIKARPZ installation

percussion instrument with 10 long wire strings up to 120 meters, four sound boxes, suitable for workshops and performances by local percussionists

[click image to watch video](#)

CALOUST GULBENKIAN FOUNDATION
LISBON 2013

SONIC BIOMA - sounds of the rain forest

18 suspended elements, gourds, bamboo, nylon strings,
speakers, sound track, screen



ROYAL OPERA HOUSE, LONDON
PAUL HAMLYN HALL, 2012



Merging digital technologies with the design process to create unique musical instruments.



About PANGEIART

Crafting new instruments with 21st century technology.

PangeiArt is a company that designs and builds musical instruments for new music, interactive exhibitions, live performances, educational programs and music productions.

Since 2001, PangeiArt has been closely collaborating with foundations, museums, cultural centers, galleries, ensembles, composers, film directors and producers.

Our services include, developing multiplayer musical instruments, the touring exhibition INSTRMNTS, with more than 30 unique musical instruments and sound installations with workshops and performances. We also create music for film, dance, opera and for our own projects with a unique set of musical instruments.

We make use of digital technologies such as 3D modeling, CNC machining, laser cutting and 3D printing for the development of new contemporary musical instruments. We also test them using Finite Element Analysis (FEA) simulation software.

Our process starts digital and ends with a beautiful physical object. "Born digital musical instruments" allow us to control every aspect in their construction from design, materials and testing to fabrication and assembly.

INSTRMNTS were exhibited at:

Afrika Museum, Netherlands;
Philharmonie Luxemburg;
National Museums of Scotland;
Centro Cultural de Belém, Lisbon;
Royal Opera House, London;
National Centre for Craft and Design, UK;
São Luiz Teatro Municipal, Lisbon;
SESC São Carlos, Brazil;
Teatro Colsubsidio, Bogota;
National Anthropology Museum, Luanda;
and many more.





Born in Angola, composer and designer Victor Gama grew up playing traditional instruments such as the kisanji, part of a family of African lamellophones that includes the mbira and kalimba. These early experiences deeply inform the design, sound, and symbolism of the instruments featured in the exhibition. They carry forward a dialogue between ancestral traditions and contemporary expression.



que jugadores deben al
juego tocando las teclas haciendo
alternativamente una pregunta y una
respuesta hasta que consigan
mantener un diálogo rítmico tocando
los dos simultáneamente

video de la mesa de diálogo rítmico
por Antonio Tascón y Víctor Gama

click image to watch video

Visit the exhibition and our team at:
www.instrmnts.com



Loods 6, KNSM-Laan 155,
1019 LC, Amsterdam

victorgama@pangeiart.org
www.pangeiart.org



a PangeiArt project
music | design | instruments